

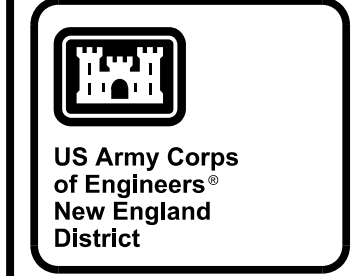
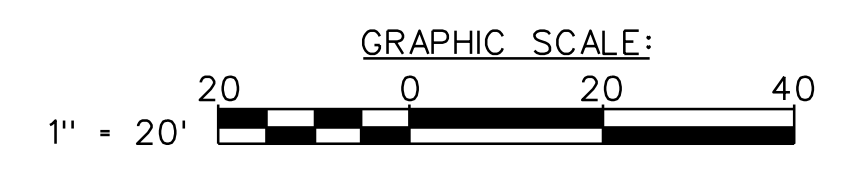
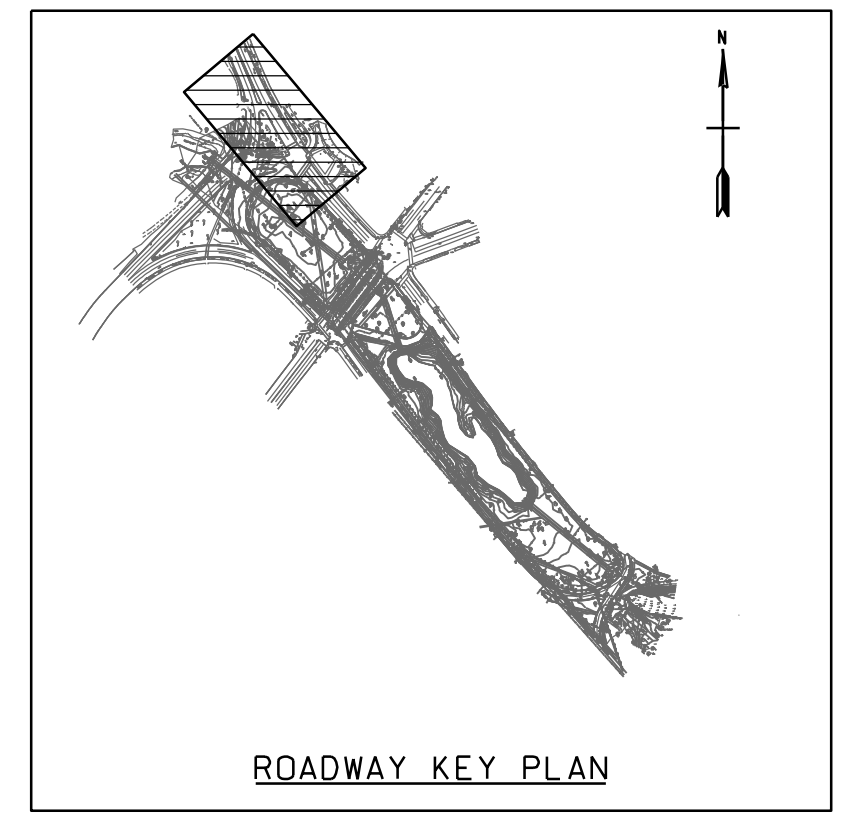
MATCH LINE SHEET CP-102

MATCH LINE SHEET CP-104

**PLAN**  
SCALE: 1" = 20'

**NOTES:**

1. THE CONTRACTOR SHALL PROTECT ALL EXISTING UTILITIES FROM DAMAGE.
2. SEE SHEET C-501 FOR CATCH BASIN AND MANHOLE DETAILS.
3. SEE SHEET C-504 FOR TYPICAL DETAILS FOR NEW PAVEMENT, SIDEWALKS AND HANDICAP RAMPS.
4. REFER TO THE TRAFFIC MANAGEMENT PLANS FOR END-CONDITION PAVEMENT STRIPING.
5. MATCH EXISTING GRADES AT LIMIT OF NEW PAVEMENT AND SIDEWALK.
6. NEW CATCH BASIN IN LANDMARK CENTER DRIVEWAY CONNECTS TO AN EXISTING MANHOLE AS SHOWN. INVERT IN OF DRAIN LINE FROM CATCH BASIN SHALL BE ADJUSTED TO AVOID CONFLICT WITH OTHER PIPES CONNECTING TO THE MANHOLE.
7. AN UNDERGROUND LAWN SPRINKLER SYSTEM IS LOCATED IN THE AREA OF THE RELOCATED LANDMARK CENTER DRIVEWAY AND SHALL BE MODIFIED AS NECESSARY TO MAINTAIN EXISTING CONNECTIONS AND COVERAGE OF LAWN IN THE VICINITY, INCLUDING NEW GRASS AREAS CREATED BY THE DRIVEWAY RELOCATION. FOR LAYOUT OF THE EXISTING LAWN SPRINKLER SYSTEM SEE INFORMATION DRAWING SHEET R-103.
8. THE EXISTING COLORED CONCRETE WALKWAY CROSSING THE RELOCATED DRIVEWAY SHALL BE REPLACED WITH CONCRETE VEHICULAR PAVEMENT WITH INTEGRAL COLOR CONCRETE TO MATCH THE EXISTING COLOR.
9. FOR CONCRETE WALKWAY AND CONCRETE VEHICULAR PAVEMENT DETAILS SEE SHEET C-504. FOR LAYOUT OF THE EXISTING COLORED CONCRETE PAVING PATTERN SEE INFORMATION DRAWING SHEET R-104.
10. EXISTING CATCH BASIN SHALL BE CONVERTED TO A MANHOLE AND THE RIM ELEVATION SHALL BE RESET TO MATCH NEW GRADE.



DATE	DESCRIPTION	APPR.

DESIGNED BY: M.D.	DATE: JANUARY 2012
DWN BY: S.F.	SOLUTION NO.: W912WA-11R-0019
SUBMITTED BY: Ben Pilgo (s)	CONTRACT NO.:
FILE NAME: MUDCP101.DGN	DRAWING CODE: MUD-1
SIZE: 11" x 20"	PLOT DATE: 11/22/02

U. S. ARMY ENGINEER DISTRICT  
CORPS OF ENGINEERS  
CONCORD, MASSACHUSETTS

MUDDY RIVER FLOOD DAMAGE  
REDUCTION AND ENVIRONMENTAL  
RESTORATION PROJECT  
(PHASE 1)

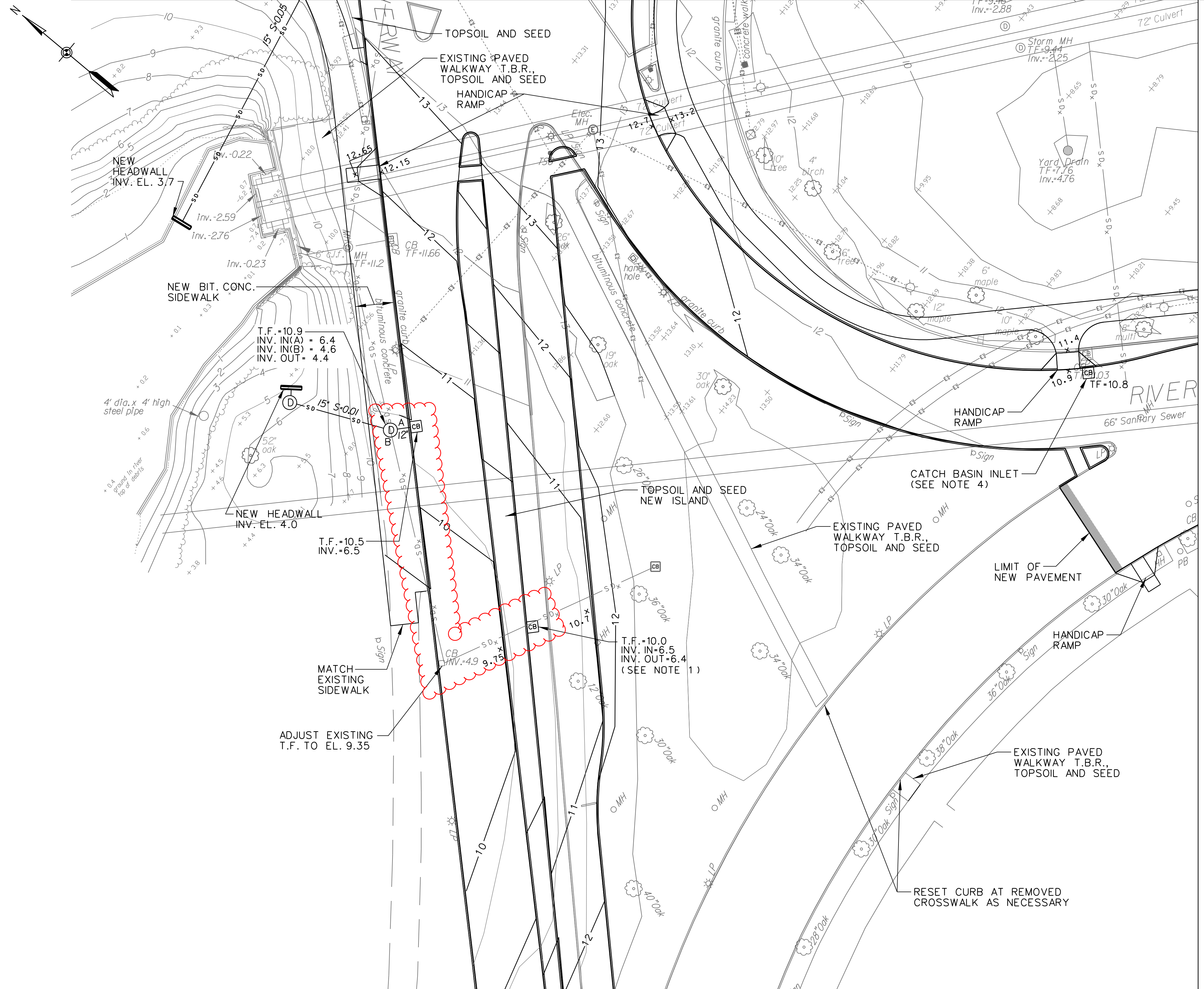
BOSTON AND BROOKLINE, MASSACHUSETTS  
ROADWAY PLAN NO. 1

SHEET  
IDENTIFICATION  
NUMBER  
**CP-101**  
SHEET 41 OF 84

MATCH LINE SHEET CP-101

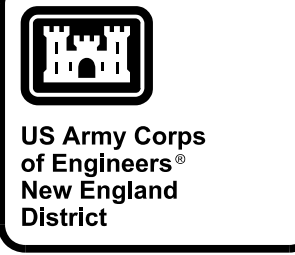
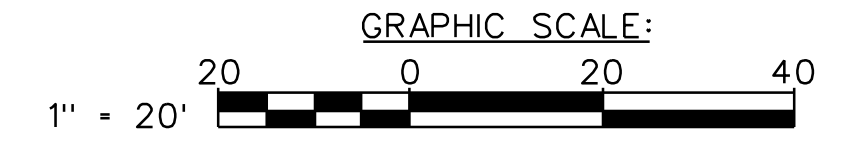
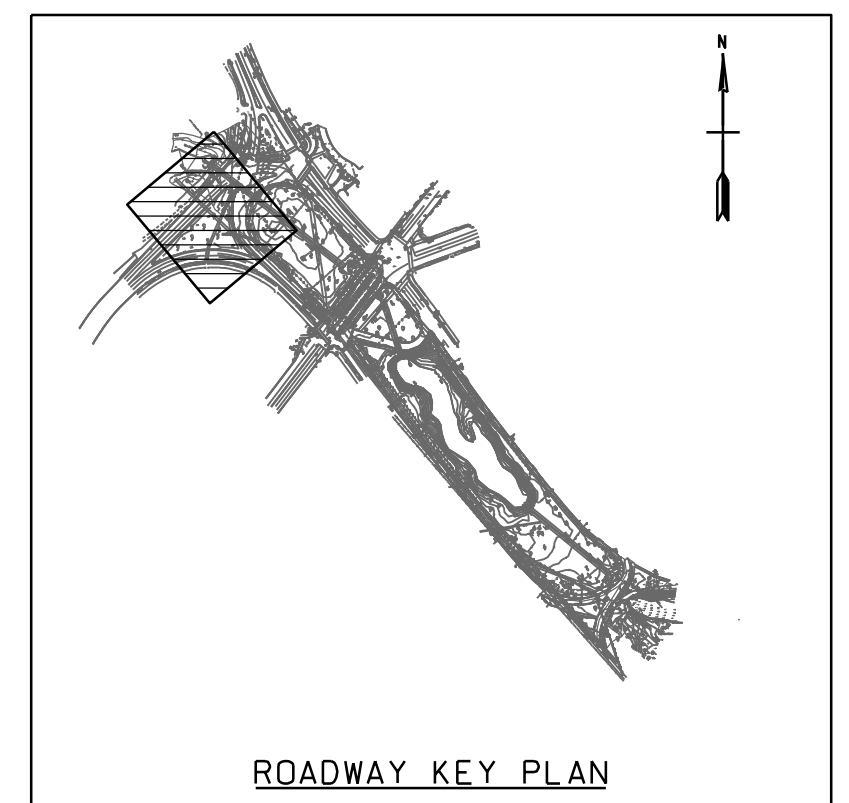
MATCH LINE SHEET CP-103

PLAN  
SCALE: 1" = 20'



NOTES:

1. INVERT IS BASED ON ASSUMED INVERT OF CATCH BASIN IN ISLAND. ACTUAL INVERT TO BE DETERMINED IN THE FIELD.
2. THE CONTRACTOR SHALL PROTECT FROM DAMAGE ALL EXISTING UTILITIES IN THE VICINITY OF NEW STORM DRAINS.
3. REMOVE PAVEMENT AND TOPSOIL AND SEED ENTIRE AREA BETWEEN SIDEWALK AND EXISTING HEADWALL TO BE REMOVED.
4. EXISTING CATCH BASIN SHALL BE MODIFIED TO MOVE THE INLET TO THE LOCATION SHOWN ON THE PLAN ADJACENT TO THE NEW CURB. THE EXISTING RIM ELEVATION SHALL BE RETAINED.
5. SEE SHEET C-101 FOR OUTLET EROSION PROTECTION FOR NEW HEADWALLS.



DATE	DESCRIPTION	APPR

DESIGNED BY: M.D.	DATE: JANUARY 2012
DWN BY: S.F.	SOLICITATION NO.: W912MA-11-R-0019
SUBMITTED BY: Ben Pilsos (s/)	CONTRACT NO.:
FILE NAME: MUDCP102.DGN	DRAWING CODE: MUD-1
SIZE: 11x17	PLOT DATE: 11/22/2012
ANSI D	PLOT SCALE: 1" = 20'

U. S. ARMY ENGINEER DISTRICT  
CORPS OF ENGINEERS  
CONCORD, MASSACHUSETTS

MUDDY RIVER FLOOD DAMAGE  
REDUCTION AND ENVIRONMENTAL  
RESTORATION PROJECT  
(PHASE 1)  
BOSTON AND BROOKLINE, MASSACHUSETTS  
ROADWAY PLAN NO. 2

SHEET  
IDENTIFICATION  
NUMBER  
**CP-102**  
SHEET 42 OF 84

